

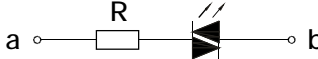
GQ Series

Part-number Description >>

GQ	★	■	— □	◇	/ ◆	/ △	/ ▲	/ ◎
Code of series	Mounting hole 8 Φ8mm 12 Φ12mm 16 Φ16mm 19 Φ19mm	The Front shape B Domed F Flat Round H High Round M Doorbell Push Button S Square Note: Square type is just for GQ12	Contact structure 10 1NO	Lamp type D Dot E Ring	Connect type J Pin terminal No letter means screw terminal	Lamp color and colorized button R Red G Green Y Yellow O Orange B Blue W White N Black	Lamp voltage AC/DC 6V AC/DC 12V AC/DC 24V AC/DC 36V Note: Other voltage can be made to order	The crust material N Nickel-plated Brass G Gold-plated Brass S Stainless steel A Zn-Al alloy(black) T Zn-Al(silvery white) PC Engineering plastic

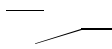
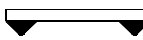


Note: 1、Pls read the catalog carefully, and choose the right part-number according to the sign.
2、Φ16(NC)andΦ19(NC)can be made to order for the screw terminal type.

Lamp Ratings >>

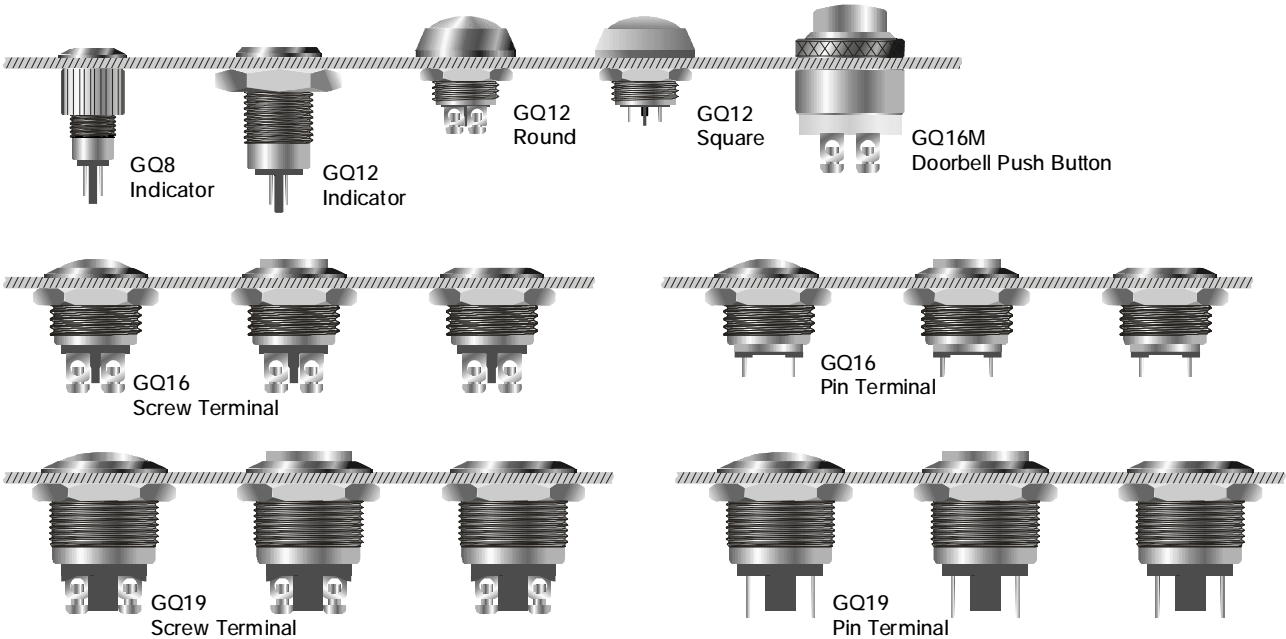
Lamp Type	LED lamp(AC/DC)				Lamp Circuit diagram	<div></div> <p>Using AC/DC LED lamp, the terminals have no difference of anode and cathode: Using inner resistance, do not need connect outer resistance. GQ16 haven't inner resistance, need connect outer resistance.</p>
Rated Voltage	AC/DC6V	AC/DC12V	AC/DC6V	AC/DC12V		
Rated Current	About 15mA					
LED Color	<div>RGYOBW</div>					
Life	40000 hours(Reference)					

Note: DC LED and other voltage can be made to order.

Switching Operation >>

Type	Sign	Diagram	Explanation
X			Using two terminals, double-break and slow-motion contact. Y type NC switch can be made to order for individual product, pls check the product description.
Y			

Installation Effect >>

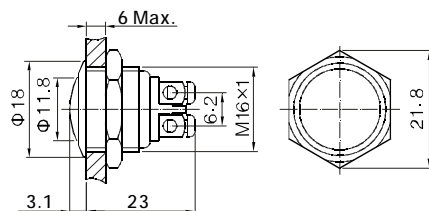


Anti-vandal push button



GQ16B-10/0

- Φ 16mm Diameter
- Switch Rating: 2A/36VDC
- Contact Configuration: 1NO(1NC Made to order)
- Operation Type: Momentary
- The Front Shape: Domed
- The Crust Material: Stainless Steel/ Brass(Nickel plated, Gold plated)
- IP Degree: IP65,IK08

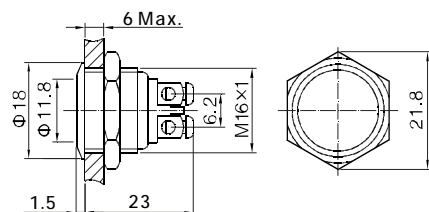


Anti-vandal push button



GQ16F-10/0

- Φ 16mm Diameter
- Switch Rating: 2A/36VDC
- Contact Configuration: 1NO(1NC Made to order)
- Operation Type: Momentary
- The Front Shape: Flat Round
- The Crust Material: Stainless Steel/ Brass(Nickel plated, Gold plated)
- IP Degree: IP65,IK08

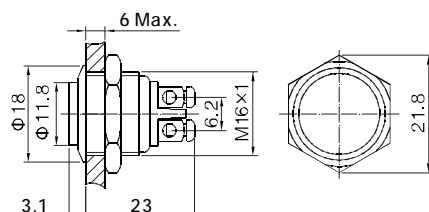


Anti-vandal push button



GQ16H-10/0

- Φ 16mm Diameter
- Switch Rating: 2A/36VDC
- Contact Configuration: 1NO(1NC Made to order)
- Operation Type: Momentary
- The Front Shape: High Round
- The Crust Material: Stainless Steel/ Brass(Nickel plated, Gold plated)
- IP Degree: IP65,IK08



Specification		GQ16B-10/0	GQ16F-10/0	GQ16H-10/0
The Front Shape		Domed	Flat Round	High Round
Terminal Type		Screw Terminal	Screw Terminal	Screw Terminal
Switching		X(double-break slow-motion contact)	X(double-break slow-motion contact)	X(double-break slow-motion contact)
Max.Switch Rating		2A/36VDC	2A/36VDC	2A/36VDC
Contact Resistance		≤50mΩ	≤50mΩ	≤50mΩ
Insulation Resistance		≥1000MΩ	≥1000MΩ	≥1000MΩ
Dielectric Intensity		2000VAC	2000VAC	2000VAC
Operating Temp		-20℃ ~ +55℃	-20℃ ~ +55℃	-20℃ ~ +55℃
Mechanical Life		1,000,000 cycles	1,000,000 cycles	1,000,000 cycles
Electrical Life		200,000 cycles	200,000 cycles	200,000 cycles
Panel Thickness		1 ~ 6mm	1 ~ 6mm	1 ~ 6mm
Torque		5 ~ 14Nm	5 ~ 14Nm	5 ~ 14Nm
Operation Pressure		About 4N	About 4N	About 4N
Operation Travel		About 1.5mm	About 1.5mm	About 1.5mm
IP Degree		IP65,IK08	IP65,IK08	IP65,IK08
Material	Contact	Sliver Alloy	Sliver Alloy	Sliver Alloy
	Button	Stainless Steel/Brass(Nickel Plated, Gold plated)	Stainless Steel/Brass(Nickel Plated, Gold plated)	Stainless Steel/Brass(Nickel Plated, Gold plated)
	Body	Stainless Steel/Brass(Nickel Plated, Gold plated)	Stainless Steel/Brass(Nickel Plated, Gold plated)	Stainless Steel/Brass(Nickel Plated, Gold plated)
	Base	PBT	PBT	PBT
	RoHS	Made to order	Made to order	Made to order