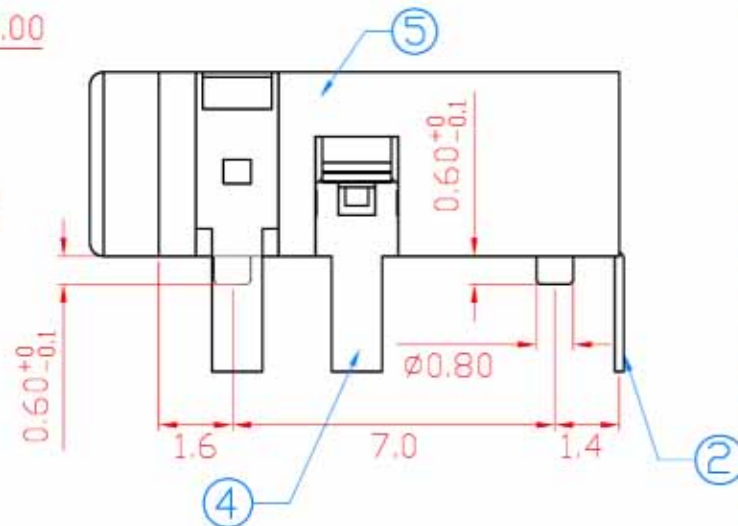
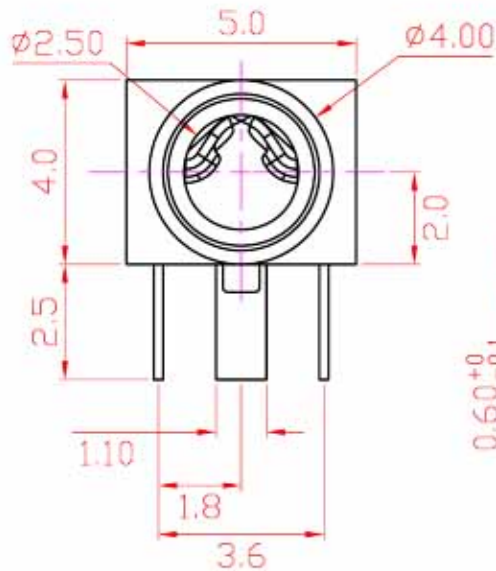
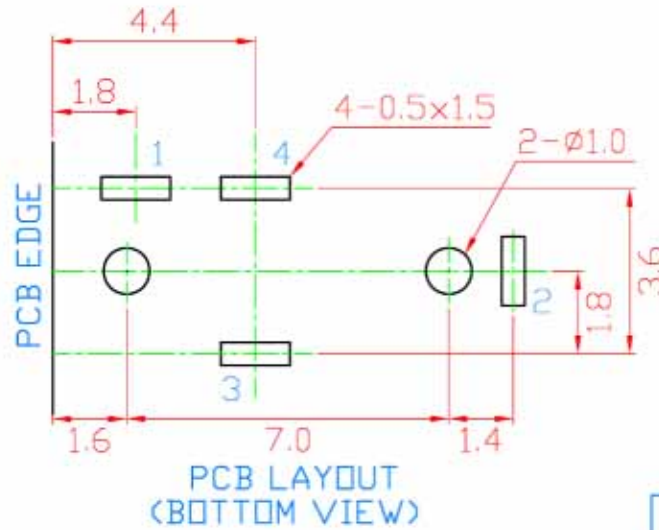
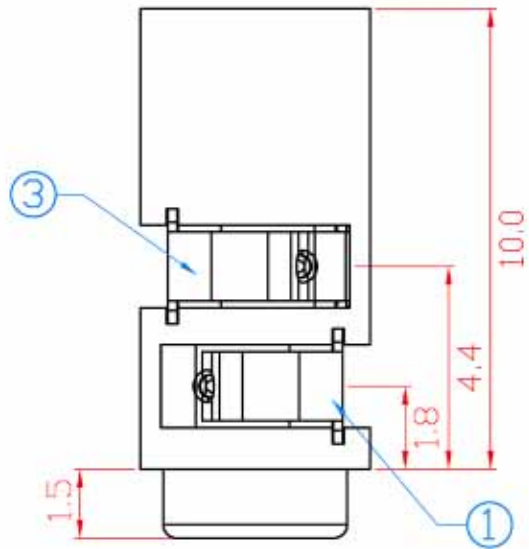
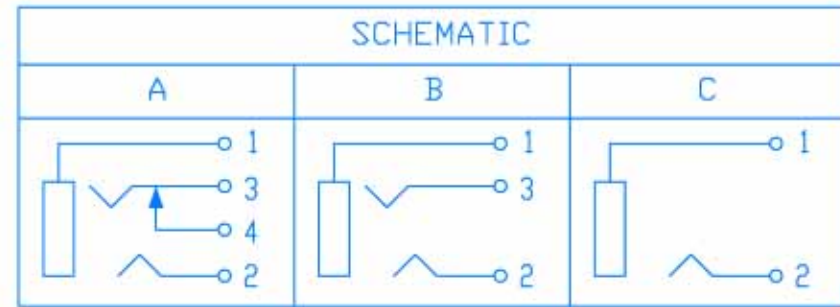


毅永企業有限公司 E-YUNG ENTERPRISE CO., LTD.



REV	ZONE	REVISION	DATE

NO.	NAME	MATERIAL	FINISH	Q'TY
1	GROUND TERM.	PBS 0.20	TIN PLATED	1
2	TIP TERM.	PBS 0.20	TIN PLATED	1
3	RING TERM.	PBS 0.20	TIN PLATED	1
4	BREAK TERM.	BARSS 0.20	TIN PLATED	1
5	HOUSING	PBT G.F.	BLACK	1



Specification:

Contact Resistance: 30m Ohm. Max. At AC 100mA Max.1KHz

Insulation Resistance: 100M Ohm Min. At 500V DC.

Rated Voltage And Current: DC 12V,2A Max ; AC 100V,1A Max.

Dielectric Withstanding Voltage: 500V AC For 1 Minute.

Durability (Life Test): A: For Phosphor Bronze 1500 Cycles Minimun.

B: For PBS 2000 Cycles Minimun.

Insertion Force: 0.3~3.0 Kg.

Extraction Force: 0.3~3.0Kg.