

Features

- Trip-free, cycling.
- Standard rating : 4 to 20 amp AC 125V & 250V , 50VDC (UL, CUL) or welcome customer design.
- Provides circuit protection and power switching in a single unit.
- Snaps into the same cutout as many common power switches.

Typical Applications

Motors, Transformers, Household and office machines, Instrumentation, Surge protectors, Power centers.

International Patent

CHINA. KOREA. GERMANY.

Safety Approvals



Technical Data

Electrical Data @25°C

Calibration:

Will continuously carry 100% of rating. May trip between 101% and 149%, but must trip at 150% of rating within one hour at + 25 C.

Dielectric Strength:

Withstands 1500VAC at 50Hz/60Hz for 60 seconds.
Between all electrically isolated terminals.

Insulation Resistance:

Not less than 100 megohms at 500VDC.

Maximum Operating voltages:

125 or 250VAC, 50/60 Hz. (model dependent)

Endurance:

6,000 operations at a rate of 6 operations per minute. (full rated current)

Ambient operation:

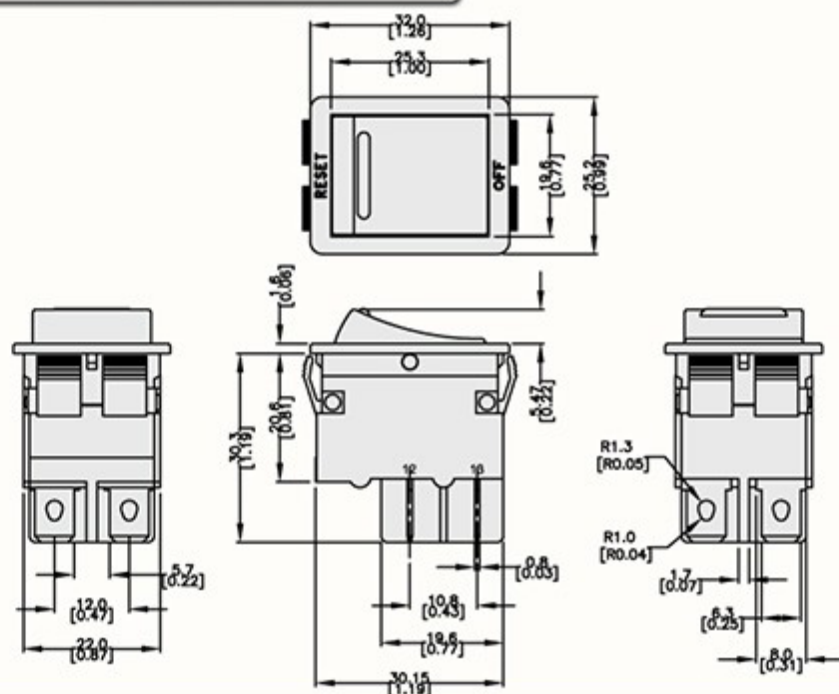
Operates normally in temperatures between -10°C to +85°C.

Ordering Information

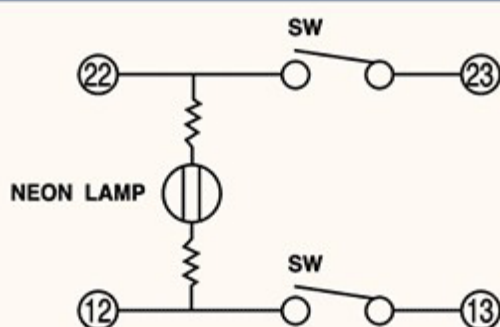


CD	K	L	1	1	C	F	B	1	R	1	1	- 38
												Customer Number
												Marking Option
												1 : RESET OFF
												Actuator Color Category
												1 : Red #1
												Actuator Color Option
												R : Red Translucent
												Housing Color Category
												1 : Black
												Housing Color Option
												B : Black
												Current Rating
												F : 15 Amp
												Voltage & Thickness of Ag
												C : AC 250V 0.2mm A : AC 125V 0.2mm
												Terminal #2 (Right Side)
												1 : With Circuit Breaker 2 : Switch Only
												Terminal #1 (Left Side)
												1 : With Circuit Breaker 2 : Switch Only
												Terminal Style Option
												L : Long
												Lamp Option
												K : With Lamp N : Without Lamp
Product Code												
CD : SS-005												

Outline Dimensions

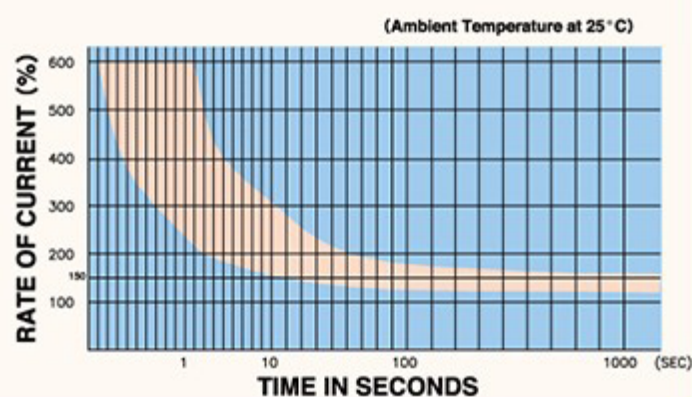


Internal connection diagram



Time VS. Current Trip Curve @+25° C

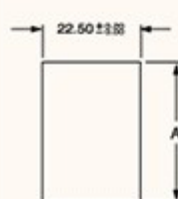
CURRENT LEVEL (% OF RATED)	TRIP TIME
100%	NO TRIP
150%	TRIP IN 1 HOUR
200%	3.0 ~ 60 SEC.
300%	0.7 ~ 12 SEC.
400%	0.35 ~ 5.0 SEC.
500%	0.2 ~ 2.9 SEC.
600%	0.1 ~ 2.0 SEC.



Ambient Compensation Table

Ambient Temperature in °C	Rating Correction Factor
	4A~20A Models
-10	X1.65
10	X1.4
20	X1.15
25	X1
30	X0.95
40	X0.9
50	X0.8
60	X0.7
85	X0.45

Suggested Mounting Hole



THICKNESS	DIMENSION (A)
0.8~1.0	30.4 $\begin{smallmatrix} +0.1 \\ -0 \end{smallmatrix}$
1.1~1.4	30.6 $\begin{smallmatrix} +0.1 \\ -0 \end{smallmatrix}$
1.5	30.8 $\begin{smallmatrix} +0.1 \\ -0 \end{smallmatrix}$